



© Lana Grossa GmbH

Design 17 – Lookbook 18

---

**SHIRT**  
**SILKHAIR & SUMMER SOFTNESS**

# SHIRT · SILKHAIR & SUMMER SOFTNESS

## Design 17 – Lookbook 18



**Size** 36/38 (46/48)

Instructions are given for smaller size. Figure in parenthesis refers to larger size. When only one figure is given, it applies to both sizes.

**Materials:** **25 (25) g each** of Lana Grossa **Silkhair** (70% superkid mohair, 30% silk; 210 m/25 g) in Fuchsia (**col 172**) and Lavender (**col 163**); **75 (75) g** in Pale Blue (**col 201**) and **50 (50) g** in Cornflower (**col 132**); **50 (100) g each** of Lana Grossa **Summer Softness** (80% organic cotton, 20% superfine Merino wool; 130 m/50 g) in Pink (**col 8**) and Purple (**col 9**); **200 (250) g** in Pastel Blue (**col 17**) and **150 (200) g** in Jeans (**col 16**). Size 6 mm needles; short size 5.5 mm circular needle.

**Note:** Work with 1 strand of each yarn held tog as given in instructions

**St st:** K on RS, p on WS.

**Main patt:** Multiple of 18 + 2. **Row 1 (RS):** K1, \* k2tog 3 times, [k1, yo] 6 times, k2tog 3 times; rep from \*, end k1. **Row 2 (WS):** Knit all sts and yos. **Row 3 (RS):** Knit all sts. **Row 4 (WS):** Purl all sts. Rep rows 1 – 4 for main patt.

**Stripe sequence back and front:** Work in main patt. Work \* 5 rows with 1 strand each Jeans (col 16) and Cornflower (col 132) held tog; 10 rows with 1 strand each Pastel Blue (col 17) and Pale Blue (col 201) held tog; 4 rows with 1 strand each Jeans (col 16) and Cornflower (col 132) held tog; 2 rows with 1 strand each Purple (col 9) and Lavender (col 163) held tog; 2 rows with 1 strand each Pink (col 8) and Fuchsia (col 172) held tog. Work from \* a total of 4 (5) times. Work 2 rows in St st with 1 strand each Jeans (col 16) and Cornflower (col 132) held tog \*\*. Work remainder in St st with 1 strand each Pastel Blue (col 17) and Pale Blue (col 201) held tog.

**Stripe sequence sleeves:** Work in main patt. Work \* 5 rows with 1 strand each Jeans (col 16) and Cornflower (col 132) held tog; 10 rows with 1 strand each Pastel Blue (col 17) and Pale Blue (col 201) held tog; 4 rows with 1 strand each Jeans (col 16) and Cornflower (col 132) held tog; 2 rows with 1 strand each Purple (col 9) and Lavender (col 163) held tog; 2 rows with 1 strand each Pink (col 8) and Fuchsia (col 172) held tog. Work from \* a total of 2 times. Work 4 rows with 1 strand each Jeans (col 16) and Cornflower (col 132) held tog, 8 rows with 1 strand each Pastel Blue (col 17) and Pale Blue (col 201) held tog \*\*. Work remainder in St st with 1 strand each Pastel Blue (col 17) and Pale Blue (col 201) held tog.

**Full-fashion decrease:** At beg of RS row, k2, skp; at end of RS row, work to last 4 sts, k2tog, k2.

**Gauge:** 17 sts and 20 rows = 10 x 10 cm in main patt with size 6 mm needles and 2 strands held tog.

**Back:** With size 5.5 mm needles and 1 strand each Pink (col 8) and Fuchsia (col 172) held tog cast on 92 (110) sts. Knit 1 WS row. Join Purple (col 9) and Lavender (col 163). With 1 strand each Purple and Lavender held tog, work rows 1 and 2 of main patt. Cont in main patt and stripe sequence until piece meas 27 (32) cm from cast-on. Place marker in first and last st on last WS row to indicate beg of armholes. Cont in main patt and stripe sequence until piece meas 20 (26) cm from armhole markers, ending with a WS row. Shape shoulders: At each shoulder edge bind off 10 sts 3 times, 9 sts 0 (1) time. Place rem 32 sts on holder.

**Front:** Work same as back to \*\*. Work remainder in St st with 1 strand each Pastel Blue (col 17) and Pale Blue (col 201) held tog same as for back and at same time, shape neck on first RS row worked with 1 strand each Pastel Blue (col 17) and Pale Blue (col 201) held tog as foll: Place center 20 sts on holder. Working each side separately and working full-fashion dec, dec 1 st at each neck edge every RS row 6 times and when same length as back to shoulders, shape shoulders same as for back. No sts rem.

**Sleeves:** With size 5.5 mm needles and 1 strand each Pink (col 8) and Fuchsia (col 172) held tog cast on 74 (92) sts. Knit 1 WS row. Join Purple (col 9) and Lavender (col 163). With 1 strand each Purple and Lavender held tog, work rows 1 and 2 of main patt. Cont in main patt and stripe sequence, ending at \*\*. With 1 strand each Pastel Blue (col 17) and Pale Blue (col 201) held tog work in St st for 6 rows then bind off all sts or, if desired, work short-rows to even out the „waves“ of the pattern. Always turn with a yo. Ktog each yo with next st as you come to them on RS rows, ptog each yo with next st as you come to them on WS rows.

Short-row 1 (RS): K4, turn.

Short-row 2 (WS): Yo (yarn over right needle), p4 to end of row.

Short-row 3 (RS): K6, turn.

Short-row 4 (WS): Yo, p6 to end of row.

Short-row 5 (RS): K8, turn.

Short-row 6 (WS): Yo, p8 to end of row.

Short-row 7 (RS): K22, turn.

Short-row 8 (WS): Yo, p8, turn.

Short-row 9 (RS): Yo, k10, turn.

Short-row 10 (WS): Yo, p12, turn.

Short-row 11 (RS): Yo, k14, turn.

Short-row 12 (WS): Yo, p16, turn.

Short-row 13 (RS): Yo, k30, turn.

Rep short-rows 8 – 13 another 1 (2) time(s).

Short-row 14 (WS): Yo, p8, turn.

Short-row 15 (RS): Yo, k10, turn.

Short-row 16 (WS): Yo, p12, turn.

Short-row 17 (RS): Yo, k14, turn.

Short-row 18 (WS): Yo, p16, turn.

Short-row 19 (RS): Yo, k28 to end of row.

Short-row 20 (WS): P4, turn.

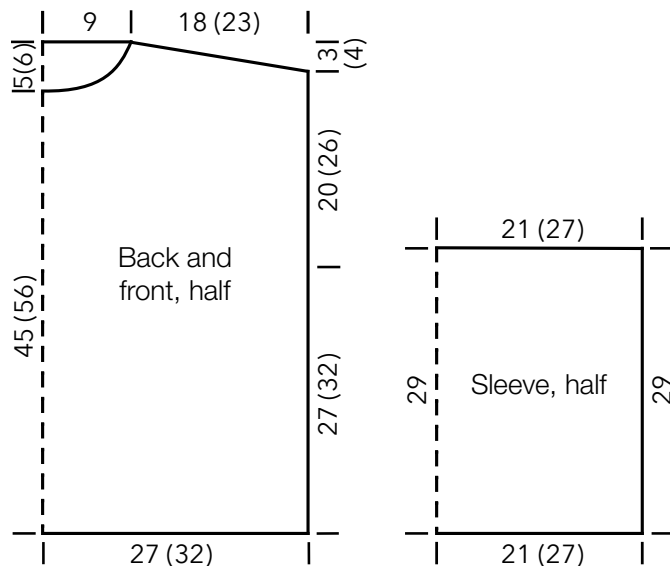
# SHIRT · SILKHAIR & SUMMER SOFTNESS

## Design 17 – Lookbook 18



Short-row 21 (RS): Yo, k4 to end of row.  
Short-row 22 (WS): P6, turn.  
Short-row 23 (RS): Yo, k6 to end of row.  
Short-row 24 (WS): P8, turn.  
Short-row 25 (RS): Yo, k8 to end of row.  
Work 1 WS row across all sts, then bind off all sts.

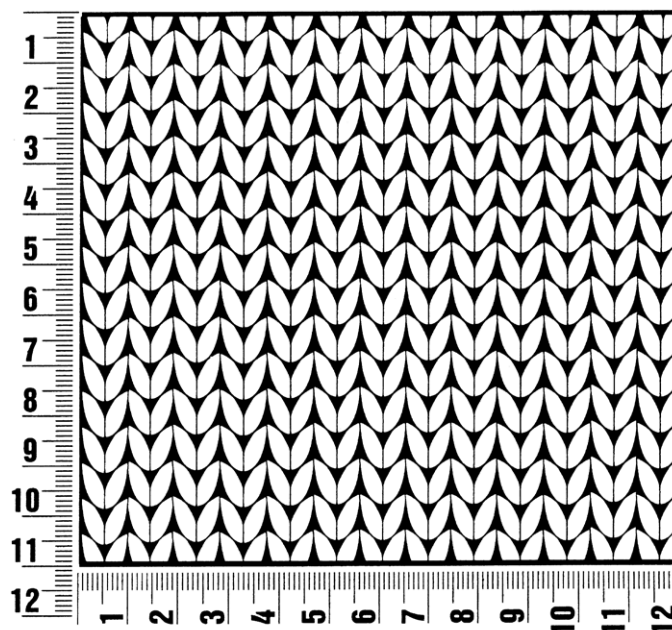
**Finishing:** Pin pieces to measurements and block. Sew shoulder seams. **Neckband:** With size 5.5 mm circular needle and 1 strand each Pastel Blue (col 17) and Pale Blue (col 201) held tog, pick up and k 74 sts evenly around neck edge: K32 from back neck holder, pick up and k 11 sts along left front neck edge, k20 from front neck holder, pick up and k 11 sts along right front neck edge. Place beg of rnd marker and join for working in rnds. Knit 1 rnd, purl 1 rnd, knit 1 rnd. Bind off all sts. Sew on sleeves between markers. Sew side and sleeve seams.



## Gauge Swatch

### Before you begin ...

...make a gauge swatch. Use the recommended needles, yarns and pattern stitch for your gauge swatch. It should measure approx. 12 cm x 12 cm. Cast-on and bind-off rows, as well as selvage stitches should not be included in the measurement. Pin your swatch and block it as you would the finished pieces of the garment. Count stitches and rows over 10 cm. If your gauge swatch is too small, switch to larger needles. If your gauge swatch is too big, switch to smaller needles.



## Abbreviations

**beg** = begin(ning) · **ch** = chain · **cont** = continue · **dec** = decreas(e)(ing) · **inc** = increas(e)(ing) · **k** = knit · **kwise** = as if to knit  
**meas** = measures · **M1L** = lift strand between sts from front to back and knit this strand through the back loop · **M1R** = lift strand between sts from the back and knit this strand through the front loop · **patt** = pattern · **pm** = place marker · **p** = purl  
**pwise** = as if to purl · **rem** = remain(ing) · **rep** = repeat(s) · **rev St st** = reverse stockinette stitch · **rnd(s)** = round(s) · **RS** = right side · **sc** = single crochet · **skp** = slip 1 stitch as if to knit, knit 1 stitch, pass slipped stitch over knitted stitch · **sk2p** = slip 1 stitch as if to knit, knit 2 together, pass slipped stitch over knitted stitch · **s2kp** = slip 2 stitches as if to knit, k 1 stitch, pass slipped stitches over knitted stitch · **sl** = slip · **st(s)** = stitch(es) · **St st** = stockinette stitch · **tbl** = through the back loop · **tog** = together · **wyib** = with yarn in back of work · **wyif** = with yarn in front of work · **WS** = wrong side · **yo(s)** = yarn over(s)

### Publisher's Info

**Publisher:** Lana Grossa GmbH, Gaimersheim, [www.lana-grossa.com](http://www.lana-grossa.com)

**Photographer:** Nicolas Olonetzky, [www.olonetzky.com](http://www.olonetzky.com)